



## BASEMENT WINDOW WELLS

### Basic Well Information

Window wells, also known as “Areawalls” are fabricated from pre-galvanized, corrugated steel. This steel has a 2.66” crest to crest by ½” depth measurement (commonly referred to as 2 ½” x ½” corrugation).

Zinc coating (galvanizing) is (G-90) ASTM A 653 M quality or better. The exposed top edge has a 5/8” minimum roll-formed bead on all heights of areawalls.

The 48” high and higher areawalls have SPC’s exclusive roll-formed double bead on both top and bottom edges for additional strength and ease in handling (Thrif-T grade included).

All styles include a wide flange for wall attachment which is pre-punched with ½” holes.

Most areawalls are one piece units up through 60” in height and incorporate the flange as an integral part of the areawall. Higher and wider area-walls are spot-welded together to insure integrity.

### Ordering

All window wells are made to order. Lead times generally run 10-14 working days. Lead times may be longer during peak building seasons.

Please consult with your local building and zoning department to make sure local building code requirements are met. At a minimum, the width of the well should include 3” overlap on either side of window. Height of well should allow for 12” below the window sill and 3” above the finished grade.

Select your wells from the options on the following pages. Write down the stock #, desired height, and quantity. Also note any grates, covers, or ladders. Please have the delivery address, address type (residential or commercial), and zip code available.

Call us at (800) 323-7055 or e-mail to [windowwell@admiralsteel.com](mailto>windowwell@admiralsteel.com)

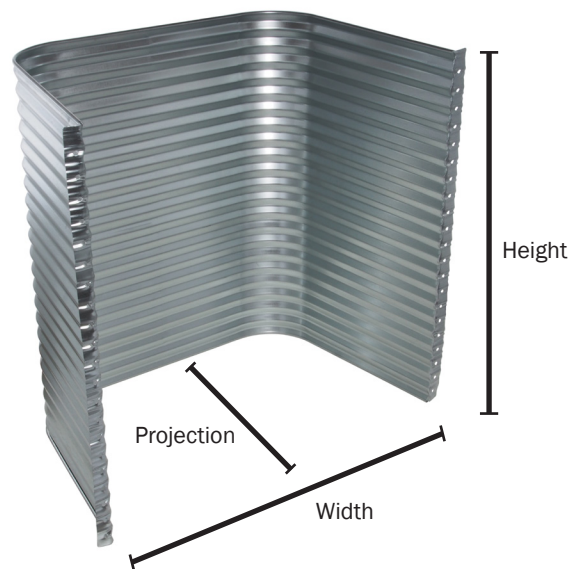
We accept Visa, Mastercard, Discover, and American Express. We also accept checks and money orders, but orders will not be processed until the payment clears our bank.

### Well Sizes

The size of a well is defined by the width from inside flange to inside flange, the projection and its height.

Egress window wells are designed to meet local building codes for entry or exit in case of an emergency. Minimum space for an egress well is 9 square feet with a minimum projection of 36”.

Check with your local building inspector to verify your code requirements before ordering or installing any well.



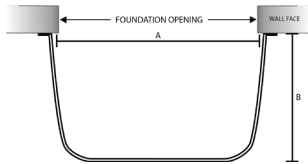
### Shipping

Due to size restrictions, most wells must ship via truck. In many cases, the cost of freight may exceed the cost of the window well. We strongly encourage you to order all wells, grates, covers, and ladders at one-time to minimize your costs.

Costs for shipping vary based upon the weight and size of the shipment and the shipment destination. All wells are shipped direct from the manufacturing facility in St. Paul, Minnesota. Residential deliveries are available for an additional fee. To qualify for commercial delivery there must be a loading dock at the shipping address. In order to save residential delivery charges, orders may be picked-up at the freight terminal.

## ECONOMY EGRESS CASEMENT WELL

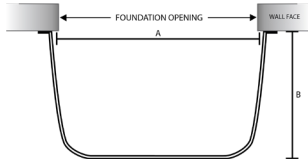
9" Corner Radius  
18 Gauge Thickness  
Ladders available



STOCK#	GAUGE	WIDTH (A)	PROJECTION (B)	HEIGHTS	SAFE-T-VIEW COVER
EC4236	18	42"	36"	12", 18", 24", 30", 36", 48", 60", 72"	SV4236
EC5036	18	50"	36"	12", 18", 24", 30", 36", 48", 60", 72"	SV5036
EC5536	18	55"	36"	12", 18", 24", 30", 36", 48", 60", 72"	SV5536
EC6036	18	60"	36"	12", 18", 24", 30", 36", 48", 60", 72"	SV6036
EC6736	18	67"	36"	12", 18", 24", 30", 36", 48", 60"	SV6736
EC7536	18	75"	36"	12", 18", 24", 30", 36", 48", 60"	SV7536

## IMPERIAL EGRESS CASEMENT WELL

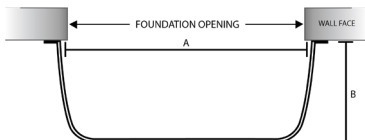
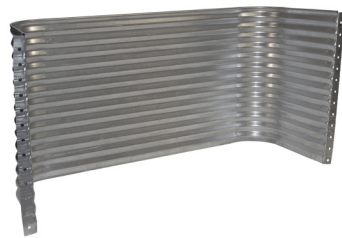
9" Corner Radius  
16 Gauge Thickness  
Ladders available



STOCK#	GAUGE	WIDTH (A)	PROJECTION (B)	HEIGHTS	SAFE-T-VIEW COVER
IC5536	16	55"	36"	72", 84", 96"	SV5536
IC6036	16	60"	36"	72", 84", 96"	SV6036
IC6736	16	67"	36"	60", 72", 84", 96"	SV6736
IC7536	16	75"	36"	60", 72", 84", 96"	SV7536
IC8036	16	80"	36"	60", 72", 84", 96"	SV8036

## ECONOMY NON-EGRESS CASEMENT WELL

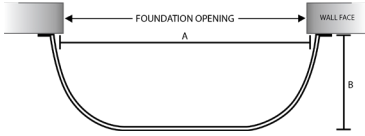
9" Corner Radius  
18 Gauge Thickness



STOCK#	GAUGE	WIDTH (A)	PROJECTION (B)	HEIGHTS	SAFE-T-VIEW COVER
EC3724	18	37"	24"	12", 18", 24", 30", 36", 48", 60", 72"	SV3724
EC4224	18	42"	24"	12", 18", 24", 30", 36", 48", 60", 72"	SV4224
EC4824	18	48"	24"	12", 18", 24", 30", 36", 48", 60", 72"	SV4824
EC5524	18	55"	24"	12", 18", 24", 30", 36", 48", 60", 72"	SV5524
EC6324	18	63"	24"	12", 18", 24", 30", 36", 48", 60", 72"	SV6324
EC7224	18	72"	24"	12", 18", 24", 30", 36", 48", 60", 72"	SV7224

## ECONOMY STRAIGHT WELL

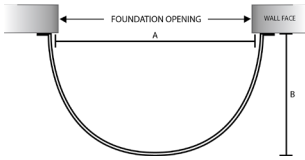
16" Corner Radius  
18 Gauge Thickness



STOCK#	GAUGE	WIDTH (A)	PROJECTION (B)	HEIGHTS	SAFE-T-VIEW COVER
ES3712	18	37"	12"	12", 18", 24", 30", 36", 48", 60", 72"	SV3712
ES4014	18	40"	14"	12", 18", 24", 30", 36", 48", 60", 72"	SV4014
ES4618	18	46"	18"	12", 18", 24", 30", 36", 48", 60", 72"	SV4618
ES5518	18	55"	18"	12", 18", 24", 30", 36", 48", 60", 72"	SV5518
ES5918	18	59"	18"	12", 18", 24", 30", 36", 48", 60", 72"	SV5918
ES6718	18	67"	18"	12", 18", 24", 30", 36", 48", 60", 72"	SV6718
ES7120	18	71"	20"	12", 18", 24", 30", 36", 48", 60", 72"	SV7120
ES7920	18	79"	20"	12", 18", 24", 30", 36", 48", 60", 72"	ES7920
ES9120	18	91"	20"	12", 18", 24", 30", 36", 48", 60", 72"	ES9120

## ECONOMY ROUND WELL

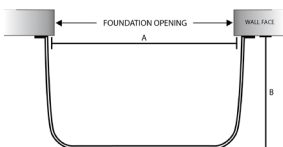
Radius Varies  
18 Gauge Thickness



STOCK#	GAUGE	WIDTH (A)	PROJECTION (B)	HEIGHTS	SAFE-T-VIEW COVER
ER4620	18	46"	20"	12", 18", 24", 30", 36", 48", 60", 72"	SV4620

## ECONOMY ACCESSWAY SQUARE WELL

4" Corner Radius  
18 Gauge Thickness



STOCK#	GAUGE	WIDTH (A)	PROJECTION (B)	HEIGHTS	SOLID COVER
EAC3630	18	36	30"	12", 18", 24", 30", 36", 48"	SC3630

## THRIF-T STRAIGHT & ROUND WELLS



TS3712



TS3712

PRODUCT LINE	STOCK#	GAUGE	WIDTH (A)	PROJECTION (B)	HEIGHTS	SAFE-T-VIEW COVER
THRIF-T STRAIGHT	TS3712	20	37"	20"	12", 18", 24", 30", 36"	SV3712
THRIF-T ROUND	TR3716	20	37"	16"	12", 18", 24", 30", 36"	SV3716

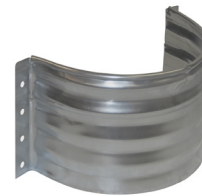
## FOUNDATION VENT AREAWELLS



FV164



FV208-12



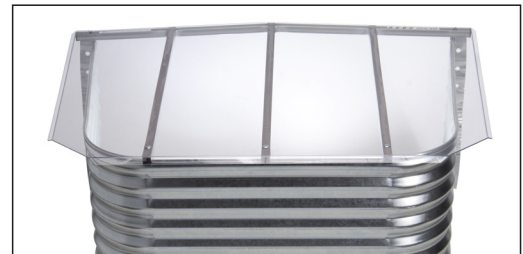
FV2012-12

STOCK#	DESCRIPTION	GAUGE	WIDTH (A)	PROJECTION (B)	HEIGHTS
FV164	FOUNDATION VENT	20	16"	4"	11.5"
FV208-12	FOUNDATION VENT	20	20"	8"	12"
FV2012-12	FOUNDATION VENT	20	20"	12"	12"

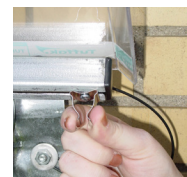
## SAFE-T-VIEW COVERS™

Strength you can see. Designed with a clear UV protected polycarbonate over galvanized metal framework.

- Clear UV protected polycarbonate over galvanized metal framework
- Vented design
- Adjustable squeeze clip mounting
- Sloped design for drainage
- No assembly, fits multiple window well profiles
- Tool-free installation.
- Rated for 350lb static load.
- Meets all requirements of IRC 2006 egress code.
- Limited Lifetime Warranty.



Safety Retainer-Hinge



Squeeze-N-Size Adjustable Mounting

## SAFE-T-GUARD™ BAR GRATES

- Designed to fit nearly flush with the top edge of SPC wells.
- Prevents the potential fall hazard of open window wells.
- Manufactured from 3/16" x 3/4" steel strip bars set 2" on center welded to 3/16" x 1" bar frame. Painted with industrial gray primer for rust resistance.
- Available in Straight, Round, or Casement styles in sizes to fit all of SPCs standard wells.
- Compatible with egress ladders.



## Egress Ladders

- Galvanized steel welded construction
- Comfort easy grip rungs
- Slotted mounting hole for permanent attachment
- Lasting 'spangle grey' Galvanized finish



LS-3

LIFE-STEP™ EGRESS LADDERS
LS-3 (3 step)
LS-4 (4 step)
LS-5 (5 step)
LS-6 (6 step)



CS-3

CORNER-STEP™ EGRESS LADDERS
CS-3 (3 step)
CS-4 (4 step)
CS-5 (5 step)
CS-6 (6 step)